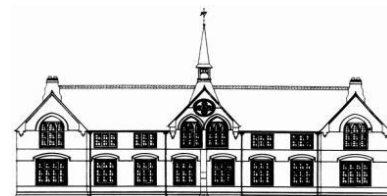


New Town Primary School Key Stage 2 Results 2019



	New Town	Local Authority	National
	Cohort: 38	Cohort: 1914	
	EAL*: 85%	EAL*: 38%	
	SEN*: 15%	SEN*: 23%	
Reading	New Town	Local Authority	National
Average Scaled Score	103	103.9	104
% at expected	69%	70%	73%
% at greater depth	22%	26%	27%
Progress	0.75		
Writing	New Town	Local Authority	National
% at expected	64%	76%	79%
% at greater depth	8%	17%	20%
Progress	-1.74		
Maths	New Town	Local Authority	National
Average Scaled Score	104.5	106.1	106.3
% at expected	72%	77%	78%
% at greater depth	31%	36%	36%
Progress	0.22		
Combined	New Town	Local Authority	National
% at expected	58%	62%	65%
% at greater depth	8%	10%	27%

***EAL- English as an additional language**

***SEN- Special educational needs**

Year 6 results have exceeded all targets in all areas. Over the year, three children left who were predicted to meet the expected standard. Two children have been discounted from the results. One child was disapplied due to working below the required standard to take the test. 85% of the cohort has English as an additional language.