

Caretaker

Actual Salary £14, 353.51

Monday – Friday (7.00-9.30am – 3.00-6.00pm)

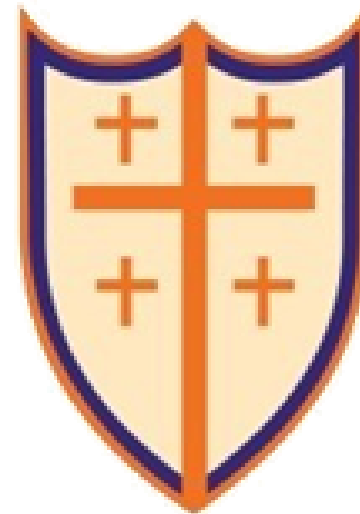
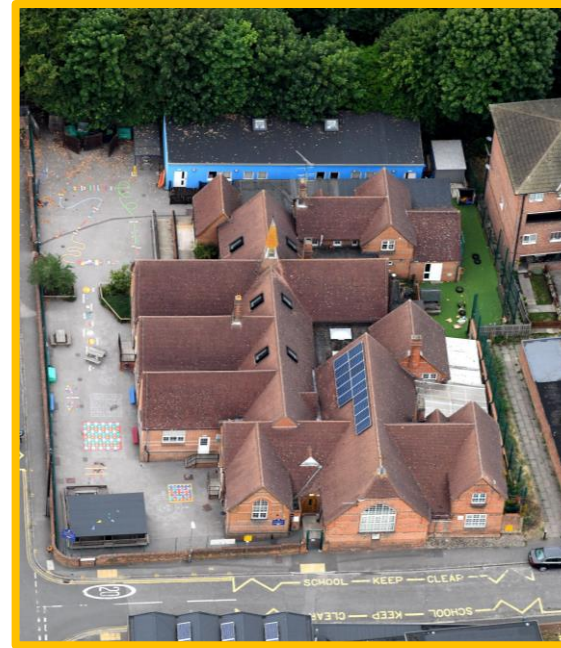
27.5 hours per week (all year round)

New Christ Church Primary School is a one form entry Primary school, just outside Reading town centre. A vacancy has arose for a caretaker to support the operations of the school site, perform Health & Safety statutory testing and carry out proactive and reactive premises improvements. We are a small Church of England School with a family feel. We are very proud of our school and its history of providing high quality education. We are looking for a Caretaker to work all year round on split shifts, who is passionate about ensuring the best learning environment for our pupils.

Applicants must:	We can offer:
<ul style="list-style-type: none">• have a flexible approach to work• evidence good level of spoken and written English language• have the ability to work positively with a variety of different people• the ability to prioritise tasks and work to deadlines• the desire to work in a primary school• have experience of a similar role (desirable)• Knowledge of H&S expectations (desirable)• Experience of building maintenance/decorating (desirable)	<ul style="list-style-type: none">• a welcoming and caring ethos• a chance to play a significant part in the continuing development of our school• ongoing support from an experienced Trust Central Team• a Multi-Academy Trust who are community led and are committed to developing and retaining high quality staff• Access to a free Staff Wellbeing Package including 24/7 online GP appointments and counselling services

For further information & application pack or school visit requests please contact Natasha Kirby, Trust Operations Manager on 07538 539690 or by email hradvisor@berkshireschoolstrust.org

The Berkshire Schools Trust is committed to safeguarding and promoting the welfare of pupils, staff and parents, and expects all staff and volunteers to share this commitment. A Disclosure & Barring Service clearance will be sought for the successful candidate.



www.newchristchurch.reading.sch.uk



**BERKSHIRE SCHOOLS
TRUST**

www.berkshireschoolstrust.org