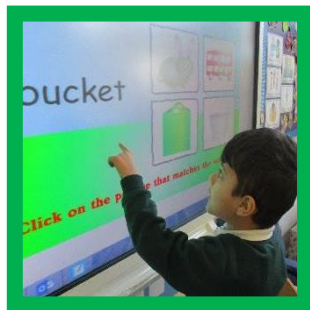


New Town Primary School

Nurturing brilliance, inspiring ambition

Welcome to The Foundation Stage



What to expect during this meeting...

- Introductions
- How to apply to school
- Why choose New Town Primary as your first choice?
- Transition; helping children settle
- Any questions

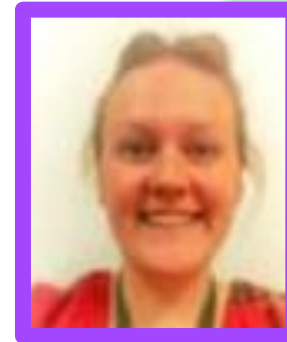
Meet The New Town Team



Miss Cornish
Head Teacher



Mrs Hawkins
Deputy Head
Teacher



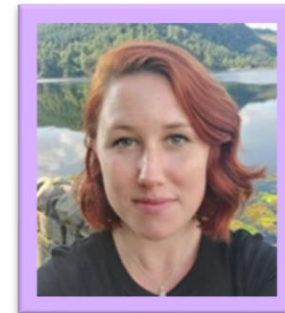
Mrs Appleton
Assistant Head
Teacher



Miss Marcham
Foundation Stage leader
and Class Teacher



Miss Phillips
Foundation Stage
Teacher



Miss Moon
Foundation
Stage Teacher

How to apply to school when living in Reading

- Applying online;
- <https://brighterfuturesforchildren.org/for-parents-carers/schools/primary-admissions/>
- Applying using paper- Not advised as takes longer to process and find out which school you get

Things to remember..

- You must apply by 15th January otherwise you are at risk of not getting your preferred school
- If are having trouble applying then please let us know and we can offer support.
- If you feel your child will require more transition or support then please speak to a member of staff
- Emails and letters offering places are sent out on **16th April 2024** and emails should be received by 5pm.

Why choose New Town Primary School?

At New Town we offer...

- Partnership between you, your child and your school
- Learning and Key Skills Teaching children to manage themselves and be independent
- Information about progress Parent meetings, reports, Online learning journals via tapestry, Early Years Foundation Stage Profile

Transition at New Town & helping children to settle

Transition will be different for each individual school and may be individualised to your child's specific needs.

At New Town we offer

- New parent meeting with class teachers
- Meet the teacher meetings with class teacher- Individual 10 minute appointments
- Stay and play sessions for all children
- Social stories of new environment for you to look at and discuss with your child before starting

As your child attends our nursery they will also have additional chances to explore the reception classrooms, meet the teachers who will be teaching them and will already be settled within this area of the school which lends to a much smoother transition to school.



The background of the slide is white and is decorated with numerous green butterflies of various sizes and orientations. Some butterflies are solid green, while others are semi-transparent, creating a layered effect. They are scattered across the entire slide, with a higher concentration around the edges.

Thank you for attending the
meeting today.

Please feel free to ask
questions